

Cheswick Blenheim Meadow



Off Coldharbour Lane, Bristol, South Gloucestershire, BS16 1FR

3 x 2 Bedroom Houses

Plots 3001, 3002, 3003 Stoke Gifford, South Gloucestershire



Front of properties



Rear of properties

These plots are due to be complete in April 2012

Situated a few miles from Bristol and close to the M4 and M5 motorways and the Bristol ring road.

The properties are built by Taylor Wimpey homes for Somer Community Housing Trust.

Applicants are required to be registered with South West Homes and have a local connection to the area (e.g. live or work within South Gloucestershire).

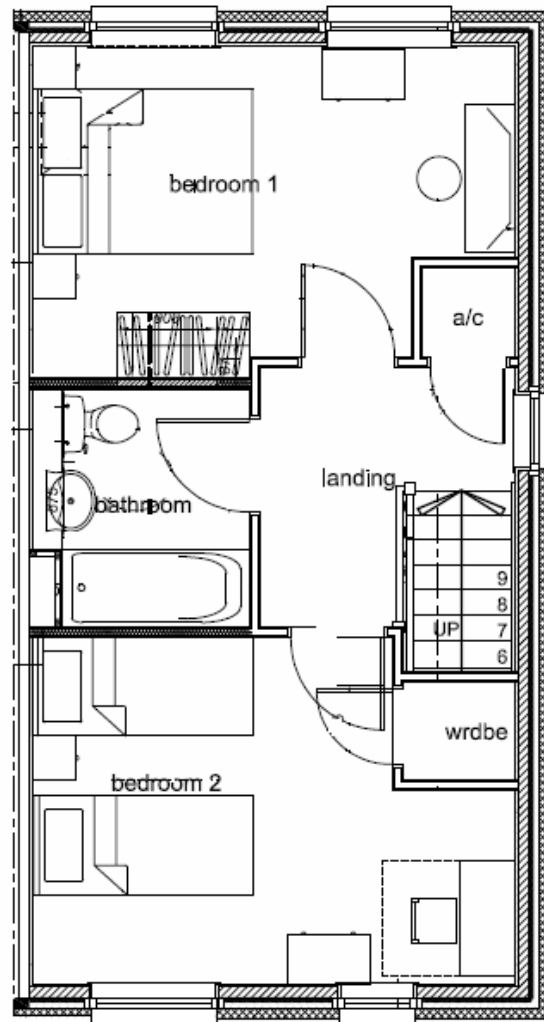
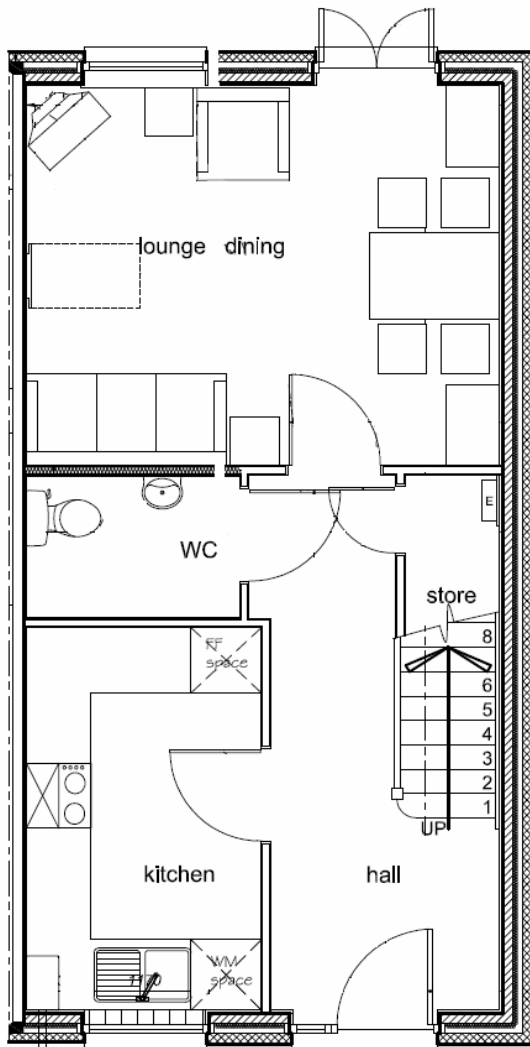
To qualify for these homes your household gross income cannot exceed (before tax) £31,763

To Apply you must contact Somer Housing on 01225 366026 before the initial closing date of Friday 10th February

These particulars do not constitute any part of an offer or contract and any intending purchaser must make their own enquiries as to the accuracy of any representations contained herein. Somer Housing Group does not guarantee the accuracy of any representations contained herein and reserves the right to amend or alter the particulars of the properties or this brochure at any time before contracts for sales with any purchaser are concluded.

2 Bedroom House Floor Plans

Plots 3001 to 3003



Energy Performance Assessments

This has been requested from the Developer and we will update these sales details as soon as either the predicted energy performance certificate or the final Energy Performance Certificate becomes available.

These particulars do not constitute any part of an offer or contract and any intending purchaser must make their own enquiries as to the accuracy of any representations contained herein. Somer Housing Group does not guarantee the accuracy of any representations contained herein and reserves the right to amend or alter the particulars of the properties or this brochure at any time before contracts for sales with any purchaser are concluded.

Site Plan – Blenheim Meadow



Plots 3001 - 3003 (plots 1 to 3 on the plan below)



- | | | | |
|---|---|---|--|
|  Wolcott
2 bedroom coach houses
Plots 13, 14 & 15 |  Gosford
3 bedroom home
Plot 21 |  Langton
3 bedroom homes
Plots 8, 9, 10, 11, 12 & 16 |  Affordable Housing |
|  Mowbray
3 bedroom home
Plot 17 |  Harton
4 bedroom homes
Plots 18, 19 & 20 |  Sycamore House
2 bedroom apartments
Plots 22, 23, 24, 25, 26, 27,
28, 29, 30 & 31 | <ul style="list-style-type: none">  Bin Storage Area  Cycle Storage Area  Garage Access  Drive Through/Car Port Access  Visitors Parking Space |

These particulars do not constitute any part of an offer or contract and any intending purchaser must make their own enquiries as to the accuracy of any representations contained herein. Somer Housing Group does not guarantee the accuracy of any representations contained herein and reserves the right to amend or alter the particulars of the properties or this brochure at any time before contracts for sales with any purchaser are concluded.