

Meridian

**Brunel Way,
Bristol, BS3 2YX,
(on the former Megabowl site)**

**7 x 2 Bedroom Apartments &
3 x 1 Bedroom Apartments
Available to purchase on the New Build
HomeBuy Scheme**



Meridian is a development of contemporary apartments within the city of Bristol with views of the Clifton Suspension Bridge. The new Cabot Circus shopping center is a 30 minute walk away and the M5 motorway is a 10 minute drive.

These particulars do not constitute any part of an offer or contract and any intending purchaser must make their own enquiries as to the accuracy of any representations contained herein. Somer Housing Group does not guarantee the accuracy of any representations contained herein and reserves the right to amend or alter the particulars of the properties or this brochure at any time before contracts for sales with any purchaser are concluded.

Specification

These properties benefit from Buildmark Choice, which is a 10 year warranty and insurance cover from the National House Building Council (NHBC).

Each property comes with 1 allocated parking space

Kitchen:

- Fully-fitted kitchen
 - Oven, hob and extractor hood
 - Vinyl Flooring
-

Living room:

- Fully carpeted
 - TV and BT points
-

Bathroom:

- White Bathroom Suite
 - Shower over Bath
 - Vinyl Flooring
-

Heating:

- Electric Panel Heaters

These particulars do not constitute any part of an offer or contract and any intending purchaser must make their own enquiries as to the accuracy of any representations contained herein. Somer Housing Group does not guarantee the accuracy of any representations contained herein and reserves the right to amend or alter the particulars of the properties or this brochure at any time before contracts for sales with any purchaser are concluded.

Site Layout



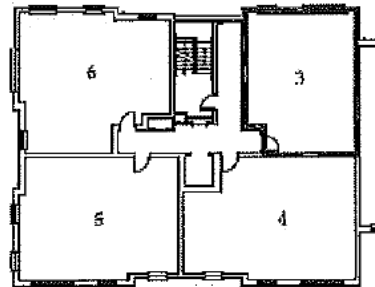
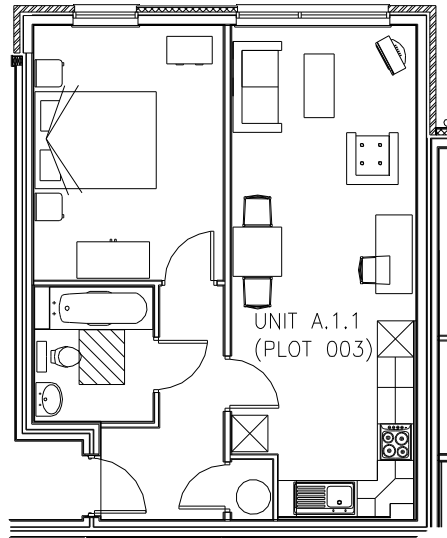
Artist's impression of the development lay out



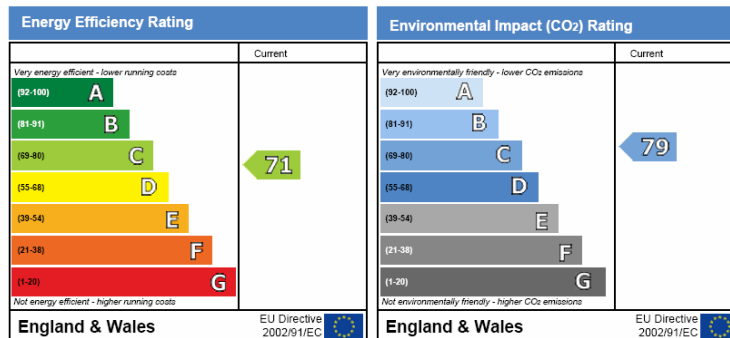
These particulars do not constitute any part of an offer or contract and any intending purchaser must make their own enquiries as to the accuracy of any representations contained herein. Somer Housing Group does not guarantee the accuracy of any representations contained herein and reserves the right to amend or alter the particulars of the properties or this brochure at any time before contracts for sales with any purchaser are concluded.

Floor Plans – Plot 3

1 Bed Apartment



FIRST FLOOR



71

79

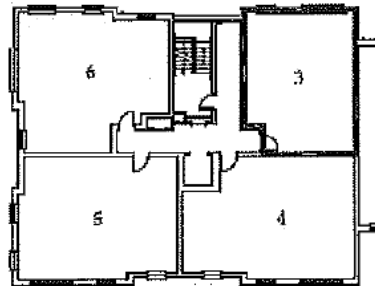
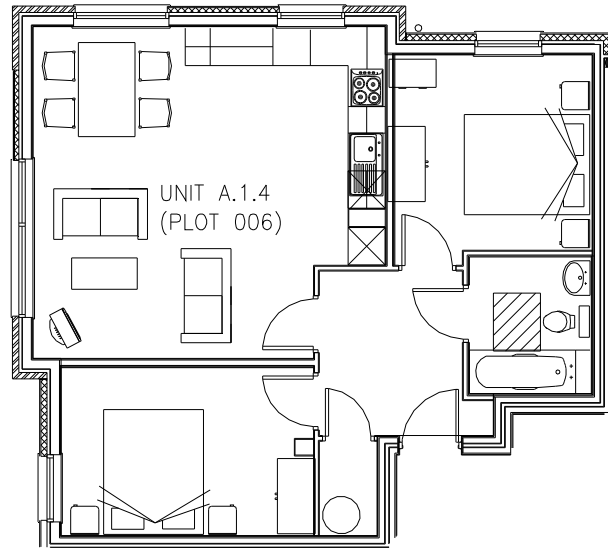
The energy efficiency rating is a measure of the overall efficiency of a home. The higher the rating the more energy efficient the home is and the lower the fuel bills are likely to be.

The environmental impact rating is a measure of a home's impact on the environment in terms of carbon dioxide (CO₂) emissions. The higher the rating the less impact it has on the environment.

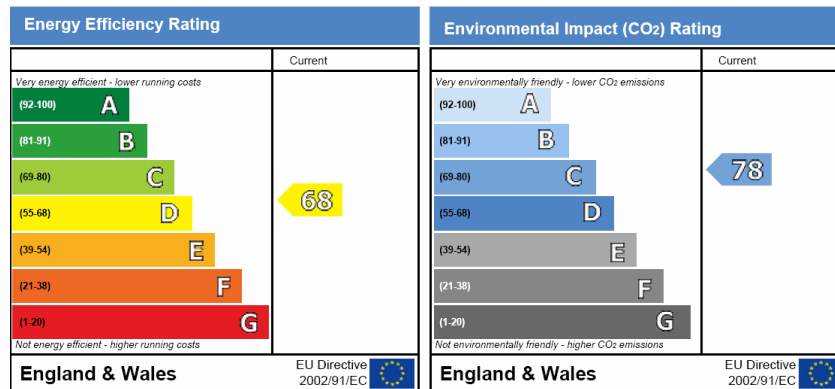
These are the Predicted Energy Performance Certificates and may vary from the actual Energy Performance Certificates which will be available once the properties have been completed.

These particulars do not constitute any part of an offer or contract and any intending purchaser must make their own enquiries as to the accuracy of any representations contained herein. Somer Housing Group does not guarantee the accuracy of any representations contained herein and reserves the right to amend or alter the particulars of the properties or this brochure at any time before contracts for sales with any purchaser are concluded.

Floor Plans – Plot 6 2 Bed Apartment



FIRST FLOOR



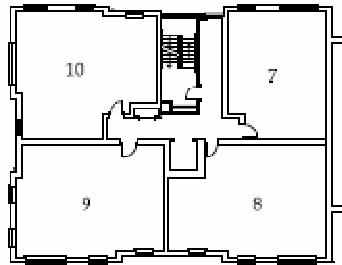
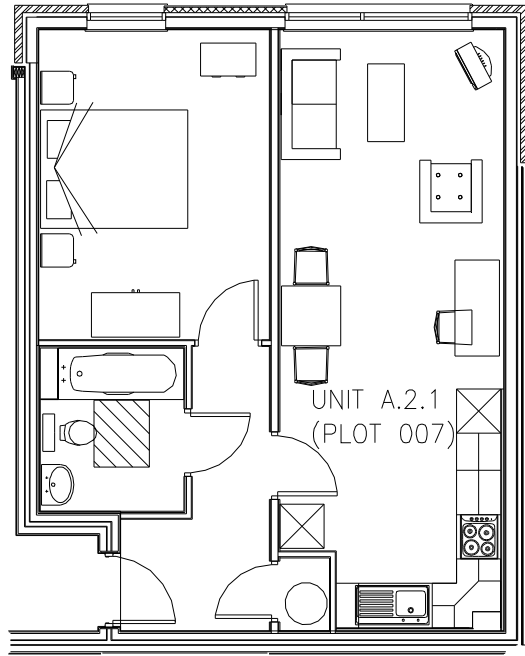
The energy efficiency rating is a measure of the overall efficiency of a home. The higher the rating the more energy efficient the home is and the lower the fuel bills are likely to be.

The environmental impact rating is a measure of a home's impact on the environment in terms of carbon dioxide (CO₂) emissions. The higher the rating the less impact it has on the environment.

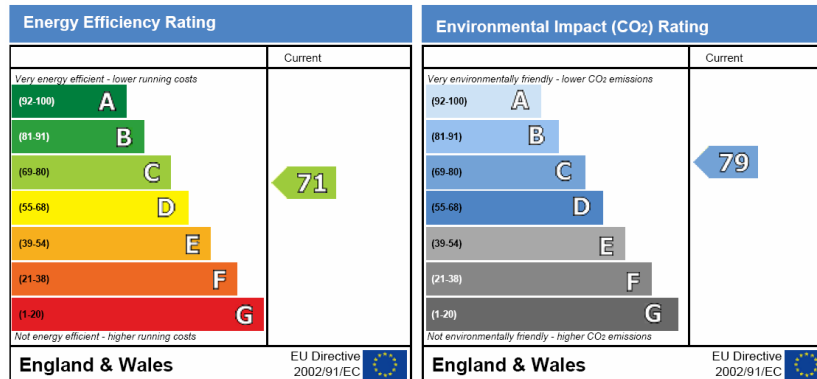
These are the Predicted Energy Performance Certificates and may vary from the actual Energy Performance Certificates which will be available once the properties have been completed.

These particulars do not constitute any part of an offer or contract and any intending purchaser must make their own enquiries as to the accuracy of any representations contained herein. Somer Housing Group does not guarantee the accuracy of any representations contained herein and reserves the right to amend or alter the particulars of the properties or this brochure at any time before contracts for sales with any purchaser are concluded.

Floor Plans – Plot 7 1 Bed Apartment



SECOND FLOOR



71

79

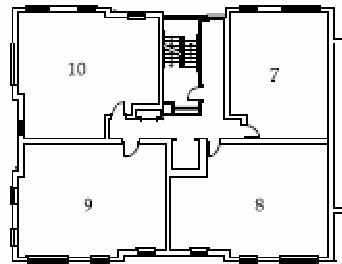
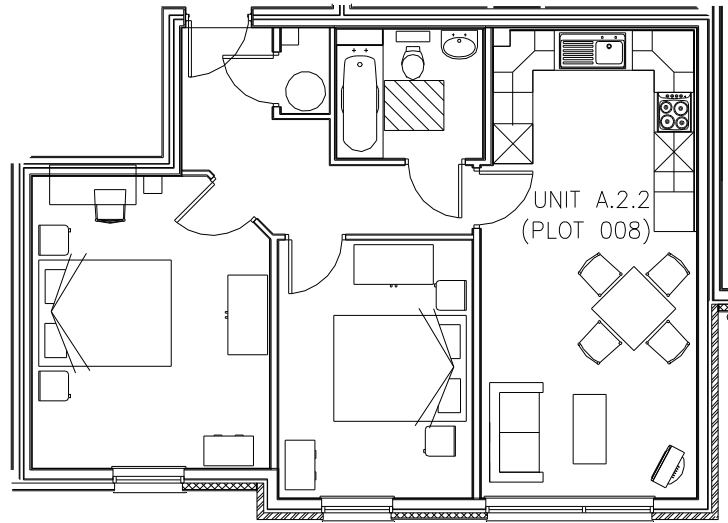
The energy efficiency rating is a measure of the overall efficiency of a home. The higher the rating the more energy efficient the home is and the lower the fuel bills are likely to be.

The environmental impact rating is a measure of a home's impact on the environment in terms of carbon dioxide (CO₂) emissions. The higher the rating the less impact it has on the environment.

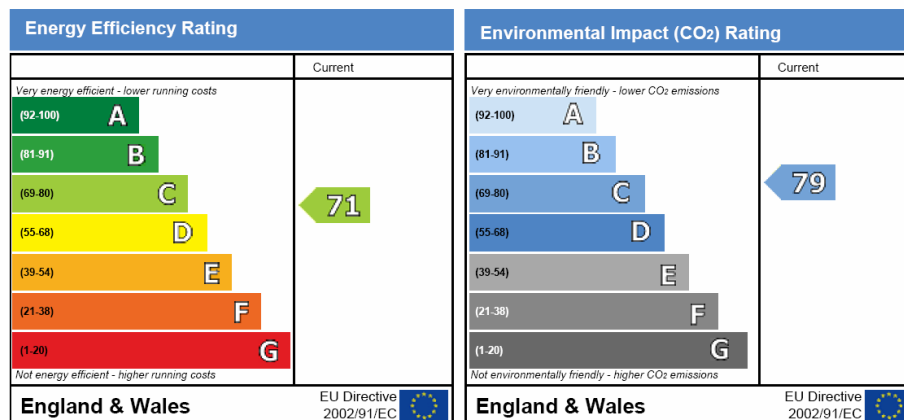
These are the Predicted Energy Performance Certificates and may vary from the actual Energy Performance Certificates which will be available once the properties have been completed.

These particulars do not constitute any part of an offer or contract and any intending purchaser must make their own enquiries as to the accuracy of any representations contained herein. Somer Housing Group does not guarantee the accuracy of any representations contained herein and reserves the right to amend or alter the particulars of the properties or this brochure at any time before contracts for sales with any purchaser are concluded.

Floor Plans – Plot 8 2 Bed Apartment



SECOND FLOOR



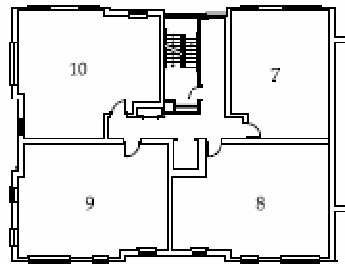
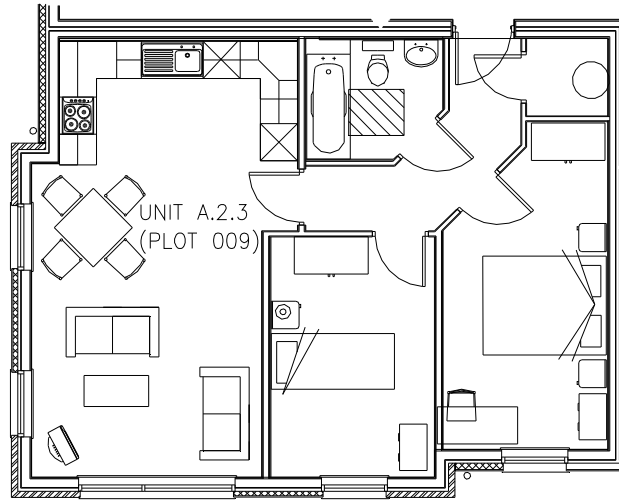
The energy efficiency rating is a measure of the overall efficiency of a home. The higher the rating the more energy efficient the home is and the lower the fuel bills are likely to be.

The environmental impact rating is a measure of a home's impact on the environment in terms of carbon dioxide (CO₂) emissions. The higher the rating the less impact it has on the environment.

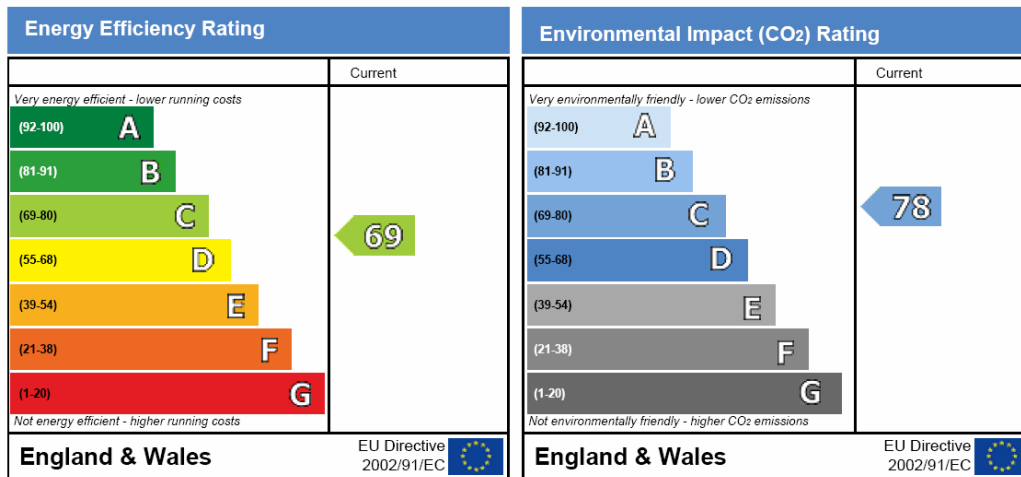
These are the Predicted Energy Performance Certificates and may vary from the actual Energy Performance Certificates which will be available once the properties have been completed.

These particulars do not constitute any part of an offer or contract and any intending purchaser must make their own enquiries as to the accuracy of any representations contained herein. Somer Housing Group does not guarantee the accuracy of any representations contained herein and reserves the right to amend or alter the particulars of the properties or this brochure at any time before contracts for sales with any purchaser are concluded.

Floor Plans – Plot 9 2 Bed Apartment



SECOND FLOOR



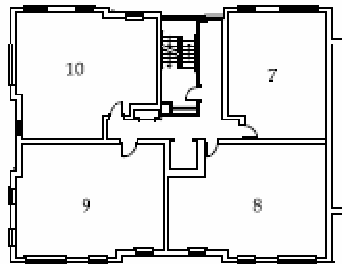
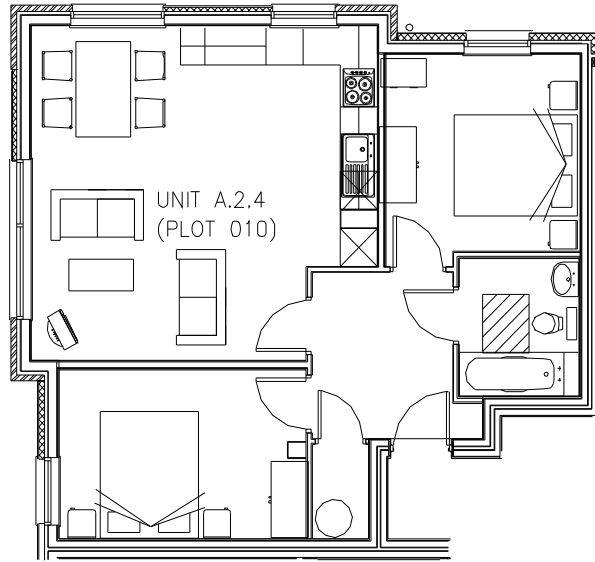
The energy efficiency rating is a measure of the overall efficiency of a home. The higher the rating the more energy efficient the home is and the lower the fuel bills are likely to be.

The environmental impact rating is a measure of a home's impact on the environment in terms of carbon dioxide (CO₂) emissions. The higher the rating the less impact it has on the environment.

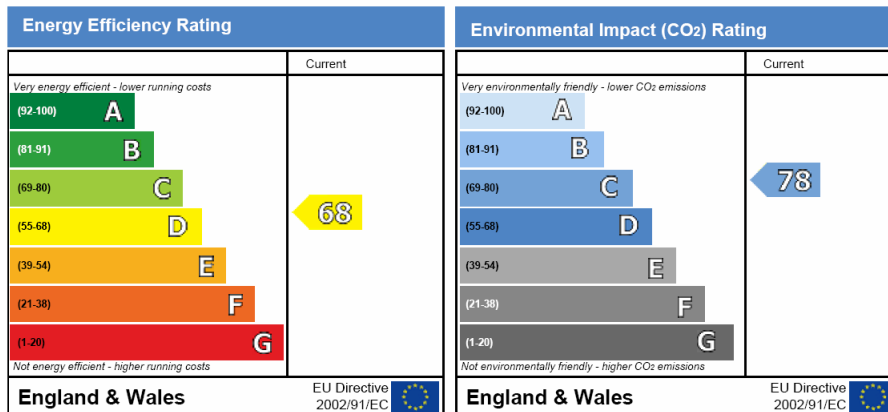
These are the Predicted Energy Performance Certificates and may vary from the actual Energy Performance Certificates which will be available once the properties have been completed.

These particulars do not constitute any part of an offer or contract and any intending purchaser must make their own enquiries as to the accuracy of any representations contained herein. Somer Housing Group does not guarantee the accuracy of any representations contained herein and reserves the right to amend or alter the particulars of the properties or this brochure at any time before contracts for sales with any purchaser are concluded.

Floor Plans – Plot 10 2 Bed Apartment



SECOND FLOOR



The energy efficiency rating is a measure of the overall efficiency of a home. The higher the rating the more energy efficient the home is and the lower the fuel bills are likely to be.

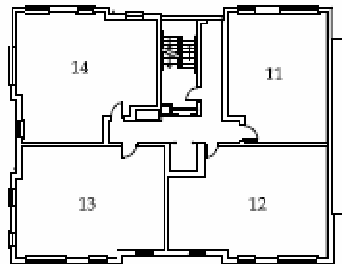
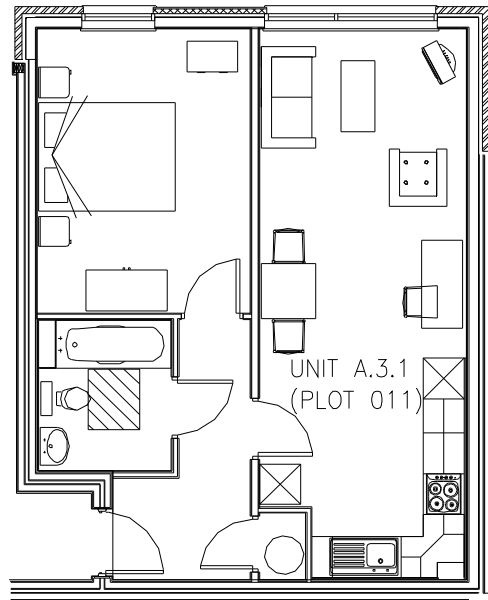
The environmental impact rating is a measure of a home's impact on the environment in terms of carbon dioxide (CO₂) emissions. The higher the rating the less impact it has on the environment.

These are the Predicted Energy Performance Certificates and may vary from the actual Energy Performance Certificates which will be available once the properties have been completed.

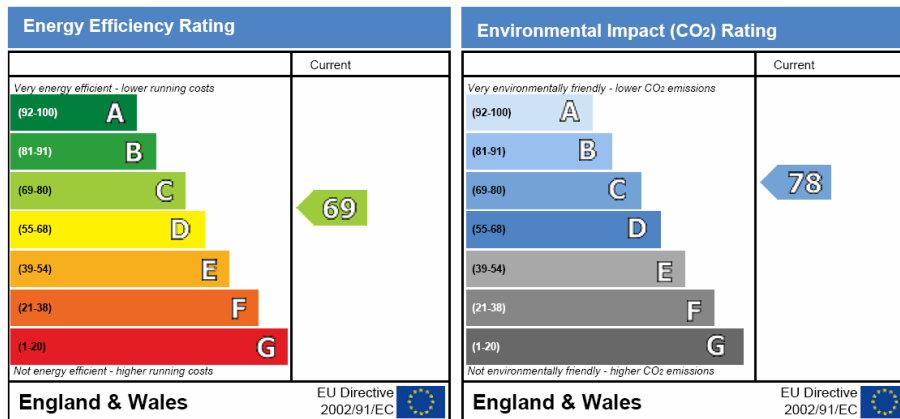
These particulars do not constitute any part of an offer or contract and any intending purchaser must make their own enquiries as to the accuracy of any representations contained herein. Somer Housing Group does not guarantee the accuracy of any representations contained herein and reserves the right to amend or alter the particulars of the properties or this brochure at any time before contracts for sales with any purchaser are concluded.

Floor Plans – Plot 11

1 Bed Apartment



THIRD FLOOR



The energy efficiency rating is a measure of the overall efficiency of a home. The higher the rating the more energy efficient the home is and the lower the fuel bills are likely to be.

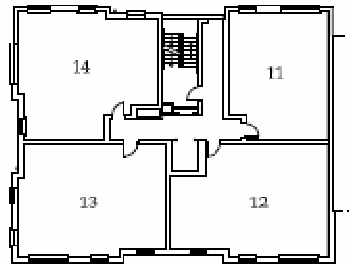
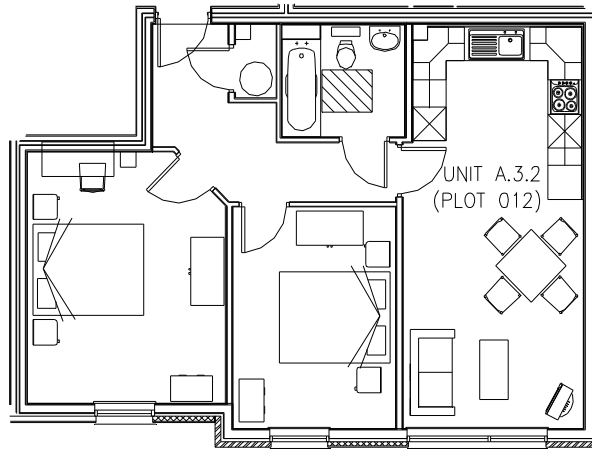
The environmental impact rating is a measure of a home's impact on the environment in terms of carbon dioxide (CO₂) emissions. The higher the rating the less impact it has on the environment.

These are the Predicted Energy Performance Certificates and may vary from the actual Energy Performance Certificates which will be available once the properties have been completed.

These particulars do not constitute any part of an offer or contract and any intending purchaser must make their own enquiries as to the accuracy of any representations contained herein. Somer Housing Group does not guarantee the accuracy of any representations contained herein and reserves the right to amend or alter the particulars of the properties or this brochure at any time before contracts for sales with any purchaser are concluded.

Floor Plans – Plot 12

2 Bed Apartment



THIRD FLOOR

Energy Efficiency Rating		Environmental Impact (CO ₂) Rating	
	Current		Current
Very energy efficient - lower running costs		Very environmentally friendly - lower CO ₂ emissions	
(92-100) A		(92-100) A	
(81-91) B		(81-91) B	
(69-80) C		(69-80) C	
(55-68) D	69	(55-68) D	78
(39-54) E		(39-54) E	
(21-38) F		(21-38) F	
(1-20) G		(1-20) G	
Not energy efficient - higher running costs		Not environmentally friendly - higher CO ₂ emissions	
England & Wales	EU Directive 2002/91/EC	England & Wales	EU Directive 2002/91/EC

The energy efficiency rating is a measure of the overall efficiency of a home. The higher the rating the more energy efficient the home is and the lower the fuel bills are likely to be.

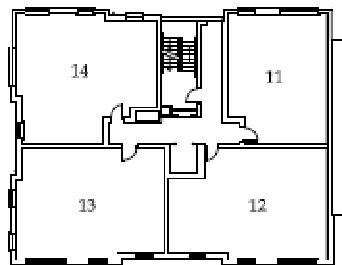
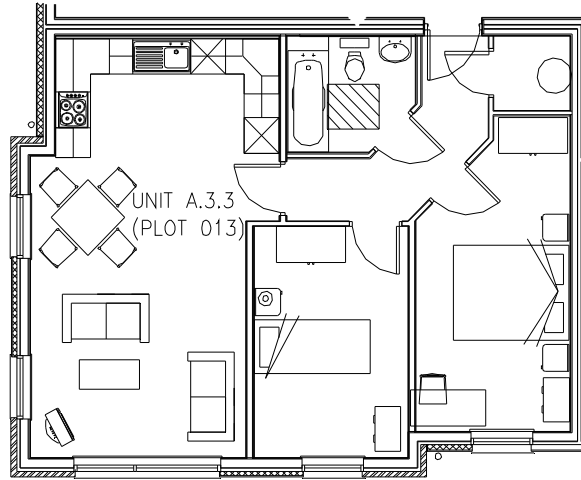
The environmental impact rating is a measure of a home's impact on the environment in terms of carbon dioxide (CO₂) emissions. The higher the rating the less impact it has on the environment.

These are the Predicted Energy Performance Certificates and may vary from the actual Energy Performance Certificates which will be available once the properties have been completed.

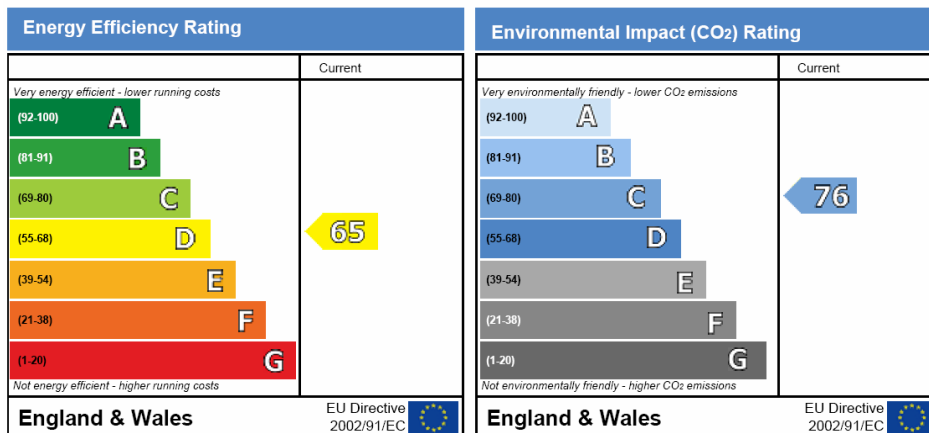
These particulars do not constitute any part of an offer or contract and any intending purchaser must make their own enquiries as to the accuracy of any representations contained herein. Somer Housing Group does not guarantee the accuracy of any representations contained herein and reserves the right to amend or alter the particulars of the properties or this brochure at any time before contracts for sales with any purchaser are concluded.

Floor Plans – Plot 13

2 Bed Apartment



THIRD FLOOR



The energy efficiency rating is a measure of the overall efficiency of a home. The higher the rating the more energy efficient the home is and the lower the fuel bills are likely to be.

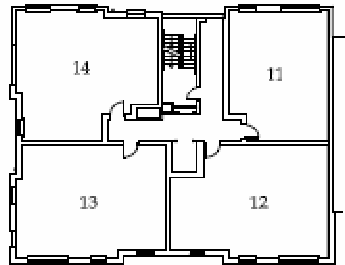
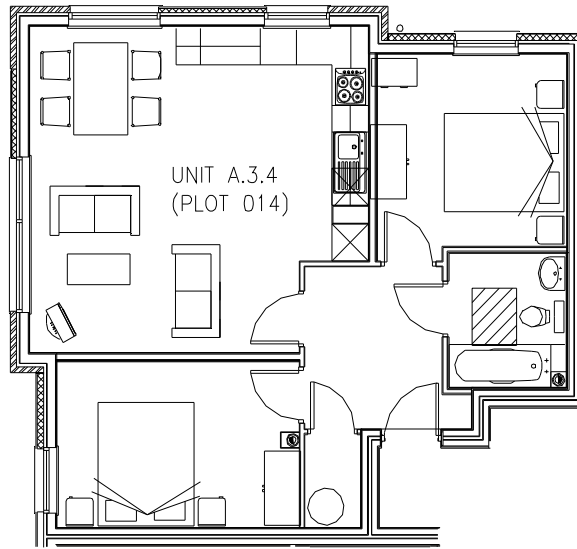
The environmental impact rating is a measure of a home's impact on the environment in terms of carbon dioxide (CO₂) emissions. The higher the rating the less impact it has on the environment.

These are the Predicted Energy Performance Certificates and may vary from the actual Energy Performance Certificates which will be available once the properties have been completed.

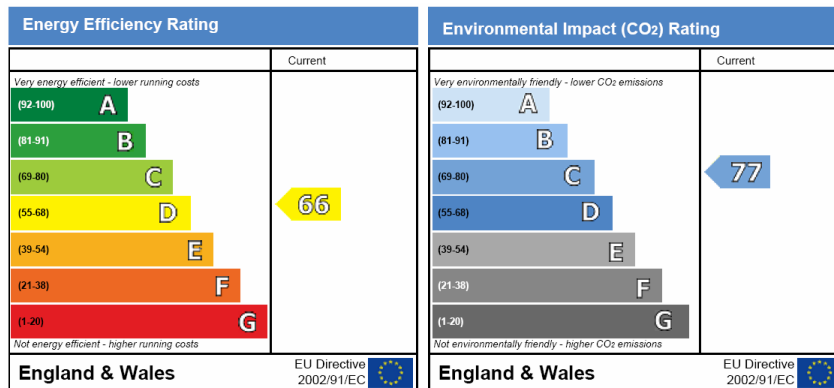
These particulars do not constitute any part of an offer or contract and any intending purchaser must make their own enquiries as to the accuracy of any representations contained herein. Somer Housing Group does not guarantee the accuracy of any representations contained herein and reserves the right to amend or alter the particulars of the properties or this brochure at any time before contracts for sales with any purchaser are concluded.

Floor Plans – Plot 14

2 Bed Apartment



THIRD FLOOR



The energy efficiency rating is a measure of the overall efficiency of a home. The higher the rating the more energy efficient the home is and the lower the fuel bills are likely to be.

The environmental impact rating is a measure of a home's impact on the environment in terms of carbon dioxide (CO₂) emissions. The higher the rating the less impact it has on the environment.

These are the Predicted Energy Performance Certificates and may vary from the actual Energy Performance Certificates which will be available once the properties have been completed.

These particulars do not constitute any part of an offer or contract and any intending purchaser must make their own enquiries as to the accuracy of any representations contained herein. Somer Housing Group does not guarantee the accuracy of any representations contained herein and reserves the right to amend or alter the particulars of the properties or this brochure at any time before contracts for sales with any purchaser are concluded.